

CERTIFICATE OF LOCATION OF GOVERNMENT CORNER

County of Anoka

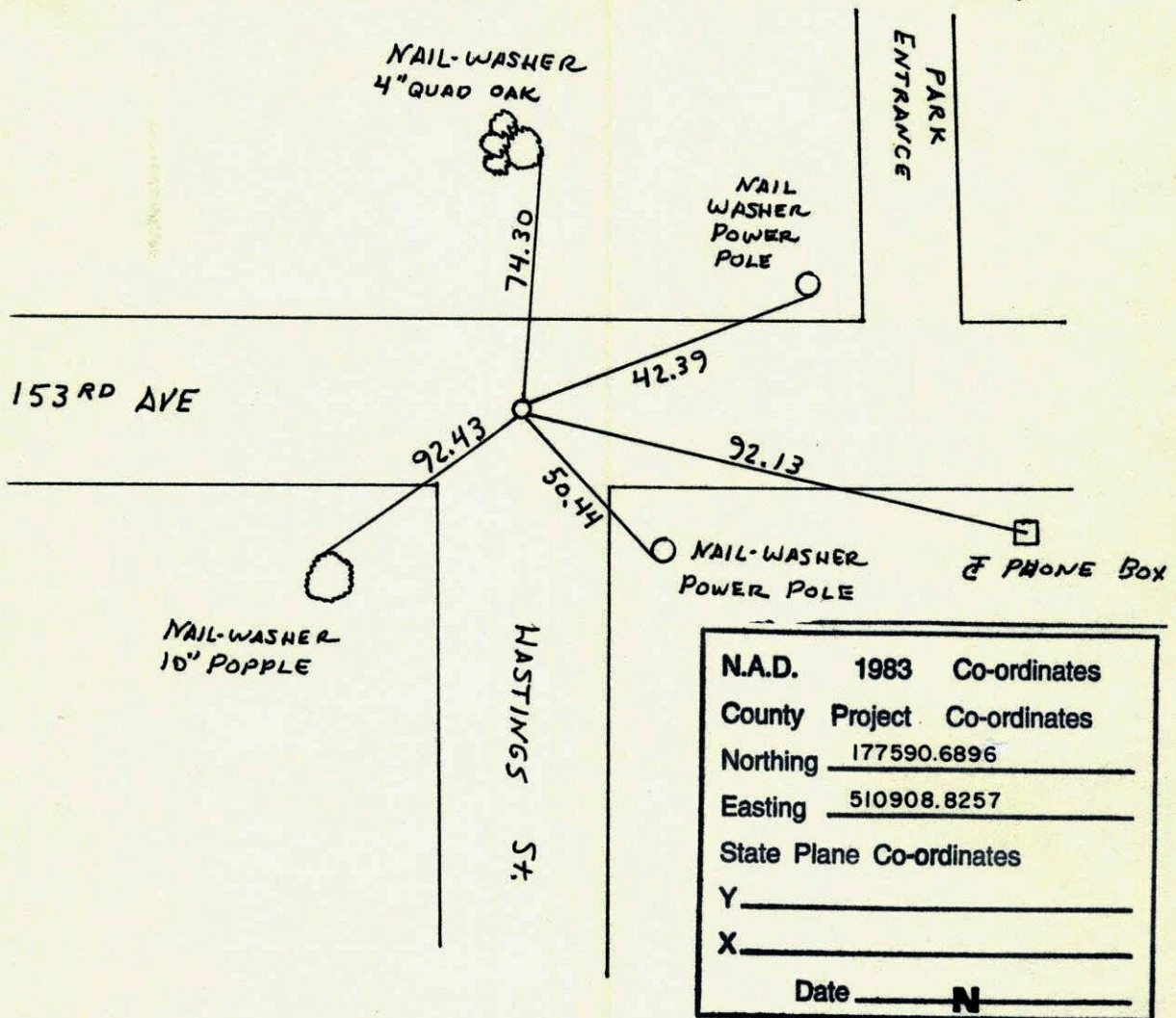
State of Minnesota

WEST 1/4 Corner of Sec. 21 Township 32 Range 23

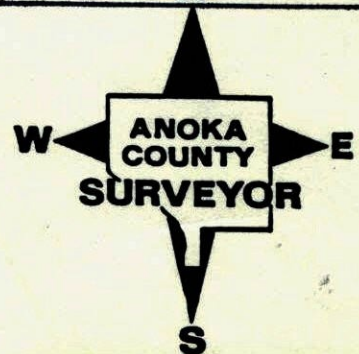
I hereby certify that on the 6TH day of JUNE, 1960, I found the described corner which was evidenced by GRANITE MONUMENT

and I further certify that to perpetuate the location of said corner, I did, at the exact location thereof, place a permanent marker consisting of CAST IRON MONUMENT

which reference or witness monuments are located in the manner following:

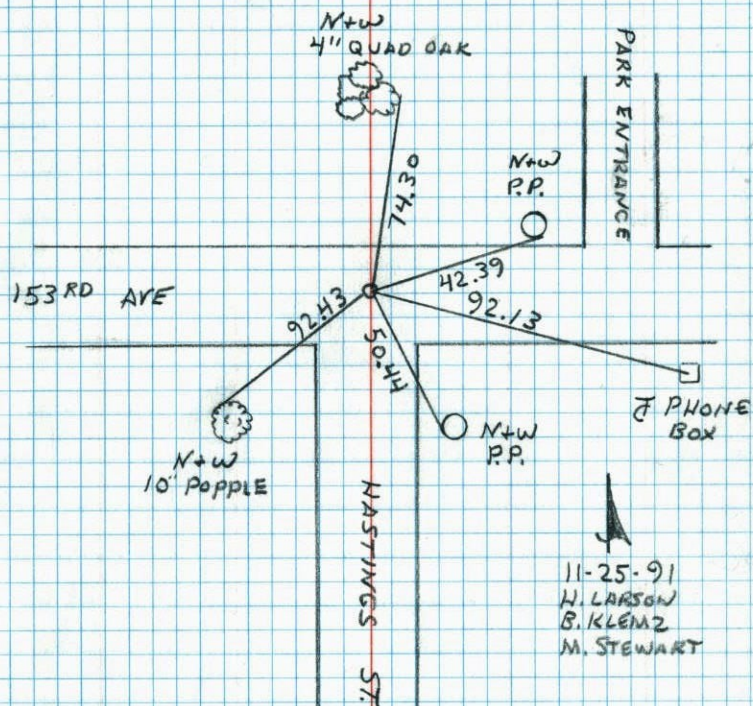


Revised date	Revised date	Revised date
1-7-91		
11-25-91		
8-2-96		



WEST 1/4 CORNER SECTION 21 T32 R23

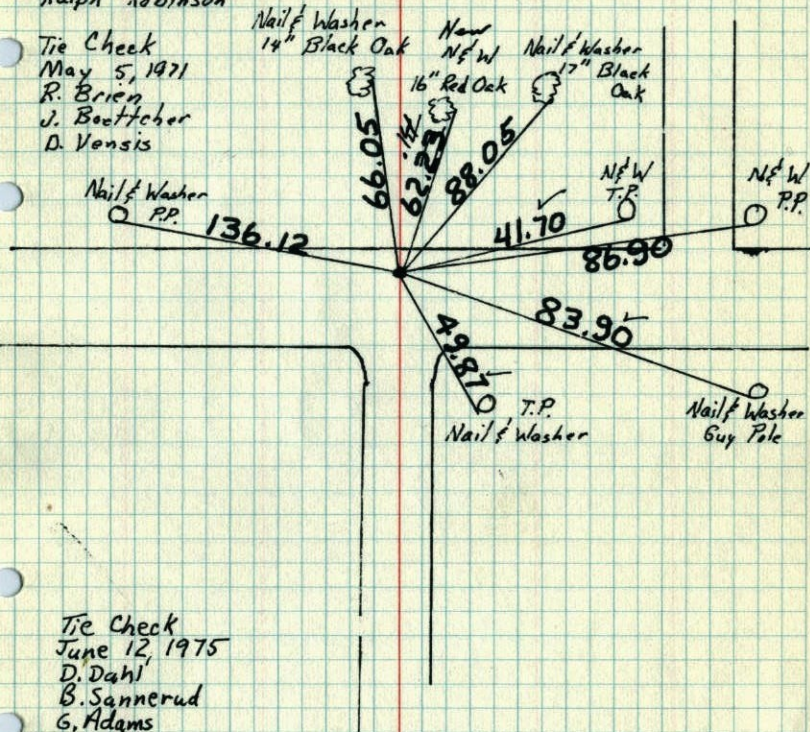
RETIED CAST IRON



W 1/4 Cor. Sec. 21 - T32 - R23

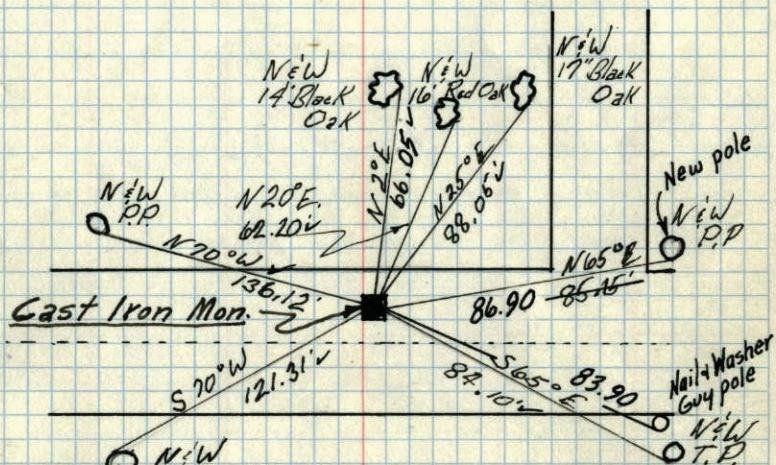
Granite Monument down 3 1/2', placed
Cast Iron Monument down 0.2'

June 6, 1960

Roland Anderson
Ralph RobinsonTie Check
May 5, 1971
R. Brien
J. Boettcher
D. VensisTEMPERATURE CORRECTED
AND HORIZONTALLY
TAPED MEASUREMENTSROLAND W. ANDERSON
COUNTY SURVEYOR
ANOKA COUNTY, MINNESOTA

W 1/4 Cor. Sec. 21, T. 32, R. 23

Granite Mon. down 3 1/2'
on E of Ditch to South
Placed Cast Iron Mon.
Cast Iron down 0.2'



Retie 7/15/64

M.D. Anderson
R. Carlson
6/16/60

Roland Anderson
Ralph Robinson

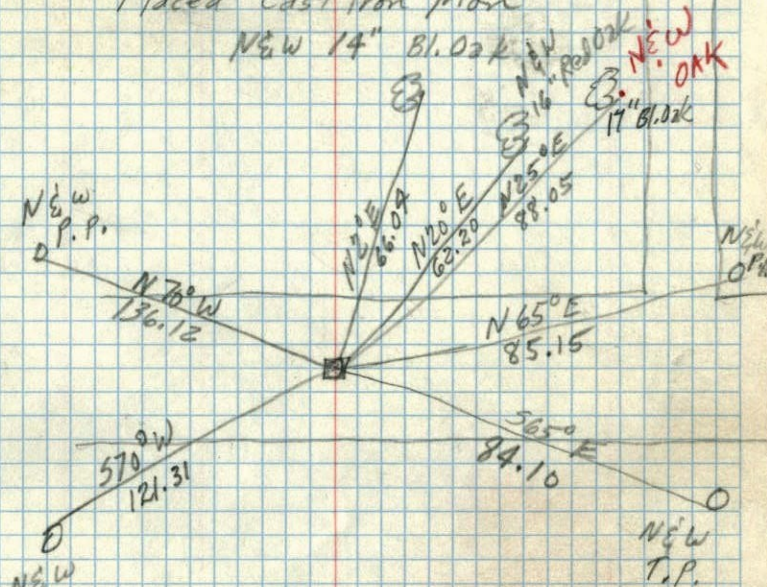
TEMPERATURE CORRECTED
AND HORIZONTALLY
TAPED MEASUREMENTS

ROLAND W. ANDERSON
COUNTY SURVEYOR
ANOKA COUNTY, MINNESOTA

Tie Check
Aug. 8, 1966
H. Larson
R. Smith

W 1/4 Corn. Sec. 21, T. 32, R. 23

Found Granite Mon. Down 3 1/2 ft.
on E of Ditch to South
Placed Cast Iron Mon.



June 6, 1960

6/10/60